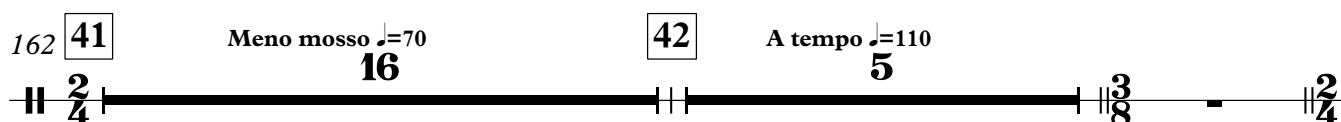
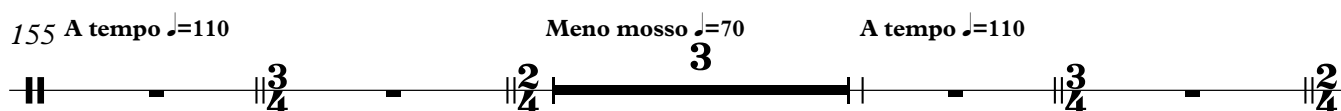
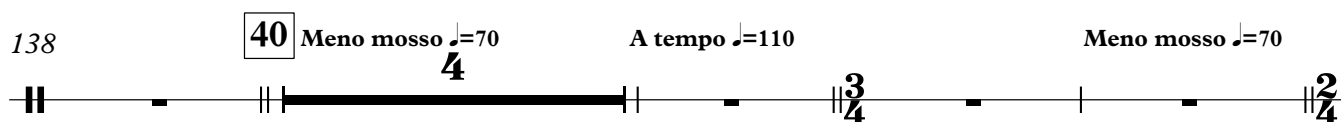
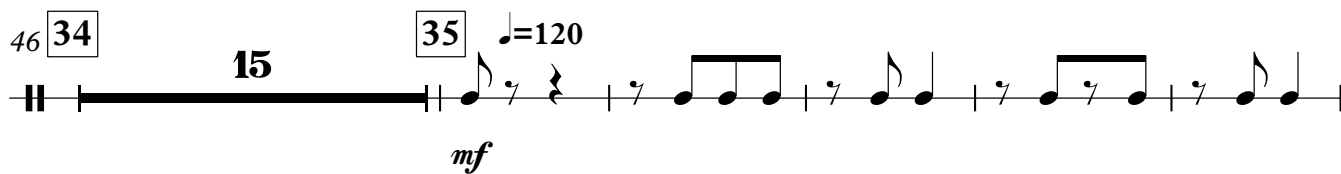
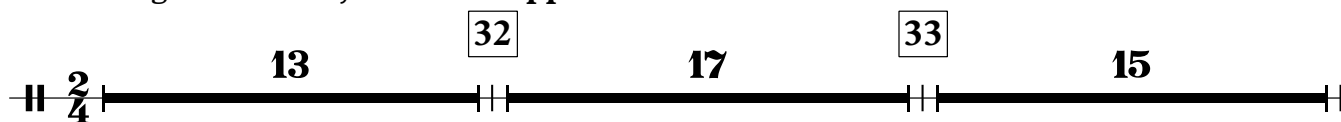


Triangle

III

Allegro con brio, ma non troppo mosso ♩ = 110



184 **3** **1** **2** **3** **1** **2**

Meno mosso, rubato ♩=80

192 **3** **3** **43** **2** **10**

206 **2** **5** **44** **24**

Tempo primo ♩=110 Meno mosso ♩=80 Tempo primo ♩=110

238 **45** **14** **1** **2** **3** **1**

256 **1** **2** **7** **46** **11**

275 **47** **3** **6** **48** **3** **2**

Meno mosso ♩=85 ♩=80 Ben moderato ♩=70 e - si - tan - do

esitando, poco accel. al Tempo I

289 **49** **9** **50** **6**

animato ♩=110 poco a poco acceler.

mp

309 **51** **10** **12**

con fuoco ♩=120 ♩=125

332 **52** **3** **2** **6**

Meno mosso ♩=70 poco acceler. poco allarg. a tempo ♩=70

344 **53** **3** **4** **3**

piu animato ♩=80 ♩=100 ♩=110

353 $\frac{3}{4}$ - $\frac{2}{4}$ 9 54 3 $\text{♩}=120$ 8

molto meno mosso
largamente $\text{♩}=50$

374 2 sub.meno mosso $\text{♩}=75$ 2 55 tr $\text{♩}=45$ In 4 In 2

poco a poco allarg.

tr

382 $\text{♩}=50$ 4 56 6

tr ff

395 57 4 In 4 $\text{♩}=40$ 3 molto. allarg.

sff molto